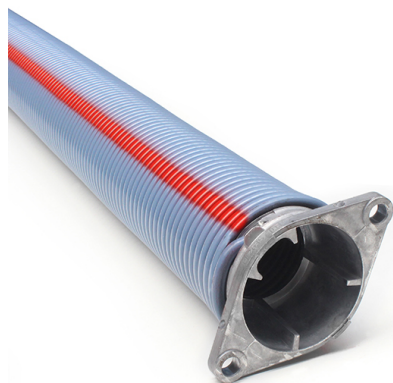


## Custom torsion spring <p>Configurator</p>

Images:



### ARTICLE CODE

An assembled torsion spring has a unique article code:

- VL = Left (LHW), VR = Right (RHW)
- 50 = Wire diameter: 5,0mm
- 1 = Spring inside diameter
  - S = 44mm
  - 1 = 51mm
  - 2 = 67mm
  - 3 = 95mm
  - 5 = 133mm
  - 56 = 142mm
  - 6 = 152mm
- 610 = Total length of the spring in mm
- PP = Powder coated, Pre-assembled
  - PP = Powder coated, Pre-assembled
  - GP = Galvanised /Pre-assembled
  - NP = Natural / Pre-assembled
  - PS = Powder coated / Snakes (Long Lengths). Etc.



Description: