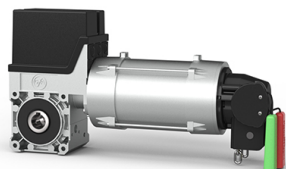


SE140-TS971 GfA operator

Images:



Description:

- | | |
|--------------------------|---|
| - Subcategory | : Industrial, GfA |
| - IND/RES | : IND |
| - Full package quantity | : 1 |
| - Unit | : piece (1) |
| - Weight / Unit | : 17kg |
| - Product Family | : a 088 |
| - Inside diameter | : 31,75mm |
| - Max. door weight | : 600kg |
| - Max. performance | : 140Nm |
| - Power supply | : 3x230/400V |
| - Marking | : GfA |
| - Commercial description | : GfA original operator kit containing operator, including GfA control, mounting bracket and 7m cable |
| - Technical description | : Complete kit: SE 14.21 SK DES (Digital limit switches) IP65 with TS 971 CEE IP54 control unit 3x230/400V, 7m cable, chain hoist |