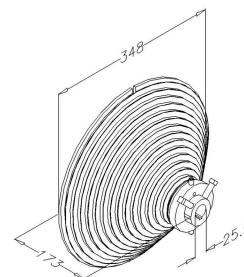
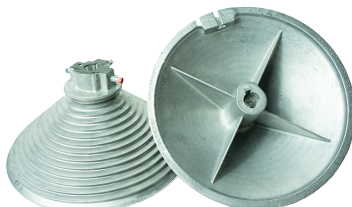


FF05VL28 Cable drum

Images:



Description:

- | | |
|-------------------------|---|
| - Subcategory | : 02. Industrial - NL |
| - IND/RES | : IND |
| - Full package quantity | : 2 |
| - Unit | : pair (2) |
| - Weight / Unit | : 14,9kg |
| - Material | : Aluminium |
| - Length | : 175mm |
| - Product Family | : 10 Cable drums |
| - Inside diameter | : 25,4mm |
| - Max. cable diameter | : 6mm |
| - Max. door weight | : (2 v.) H max.= 7000mm, 900kg. -- (0.5 v.) H max.= 8500mm, 750kg |
| - Outside diameter | : 340mm |
| - Safety windings | : 0.5 |
| - Marking | : Red = Left, Black = Right |
| - Technical description | : Max. opening with 2 safety wraps is 7000mm. Lifting cable provided with cable sleeve fixed in cutout of the drum or passed through camber of the drum, fixed with hollow-head screw. Drum fixed directly to shaft with 2x3/8-16 UNC-1,5. See drum data for more info. |