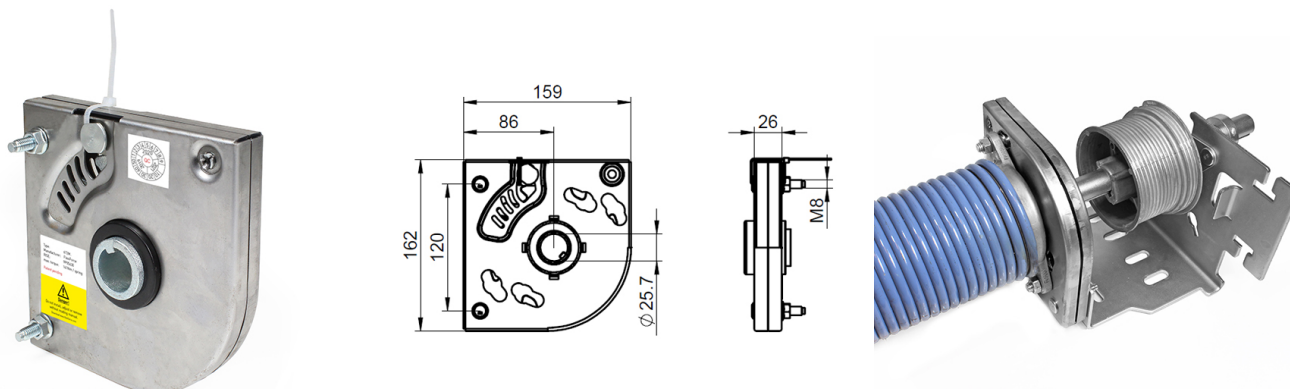


## 672LL Spring break device

Images:



### Description:

- Subcategory	: 02. Industrial
- IND/RES	: IND
- Full package quantity	: 12
- Unit	: piece (1)
- Weight / Unit	: 1,55kg
- Material	: Galvanised Steel
- Height	: 164mm
- Product Family	: a 001
- Heart-to-heart	: 86mm
- Inside diameter	: 25,4mm
- Max. torque	: 156Nm
- Technical description	: Optimized for 80% of industrial door configurations. Innovative new design with closed casing and improved ratchet wheel. Easy installation with easy fix bolts.