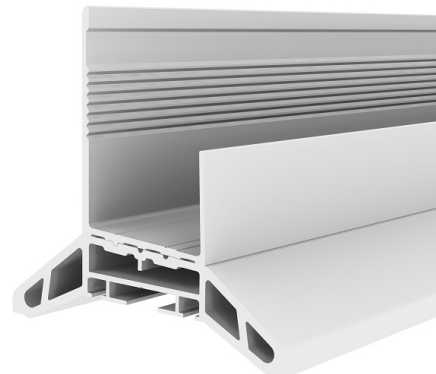
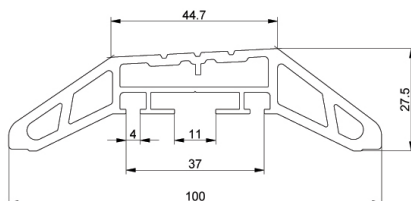
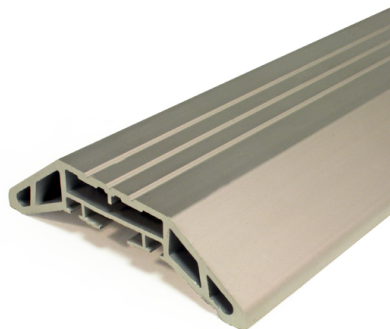


1041LTB3050 Threshold profile

Images:



Description:

- | | |
|--------------------------|---|
| - Subcategory | : 04. SafeStep/SideStep |
| - IND/RES | : BOTH |
| - Full package quantity | : 48 |
| - Unit | : piece (1) |
| - Weight / Unit | : 5,5kg |
| - Material | : Anodised Aluminium |
| - Height | : 27,5mm |
| - Length | : 3050mm |
| - Width | : 100mm |
| - Product Family | : a 053 |
| - Commercial description | : L=3050mm |
| - Technical description | : Providing the opportunity to equip your residential doors with a low threshold pass door. Part of two-piece profile, which makes creating a door opening very easy without milling. Join with 1041U (40mm) profile. |