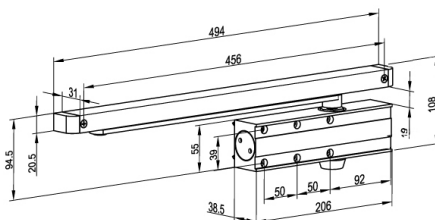
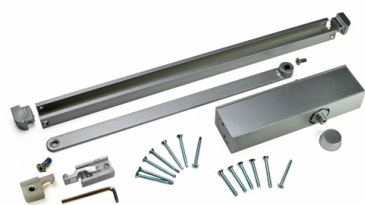


## 1034FLN Door pusher

Images:



Description:

- |                          |                                                                                                                                                                                                                                         |
|--------------------------|-----------------------------------------------------------------------------------------------------------------------------------------------------------------------------------------------------------------------------------------|
| - Subcategory            | : 01. Door closers                                                                                                                                                                                                                      |
| - IND/RES                | : BOTH                                                                                                                                                                                                                                  |
| - Full package quantity  | : 10                                                                                                                                                                                                                                    |
| - Unit                   | : piece (1)                                                                                                                                                                                                                             |
| - Weight / Unit          | : 2,0kg                                                                                                                                                                                                                                 |
| - Material               | : Aluminium                                                                                                                                                                                                                             |
| - Height                 | : 108mm                                                                                                                                                                                                                                 |
| - Width                  | : 494mm                                                                                                                                                                                                                                 |
| - Product Family         | : a 006                                                                                                                                                                                                                                 |
| - Max. door weight       | : 45kg                                                                                                                                                                                                                                  |
| - Marking                | : 1034FLN FF                                                                                                                                                                                                                            |
| - Commercial description | : door <45kg                                                                                                                                                                                                                            |
| - Technical description  | : Made of Aluminium, supplied with slide rod. Because of flat construction safer and for this reason very suitable for low head room and normal lift system. Suitable for a pass door with a max width of 900mm and max weight of 45kg. |