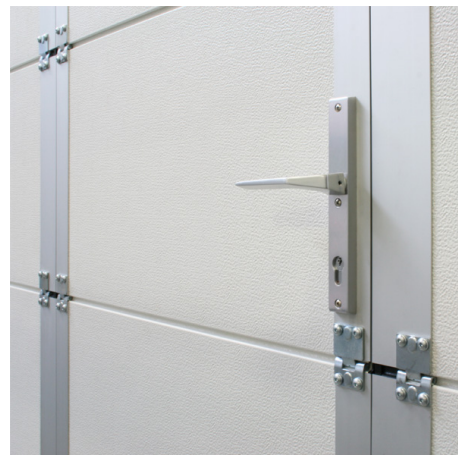
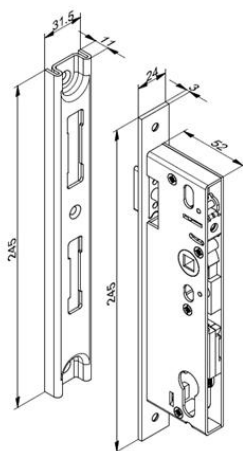
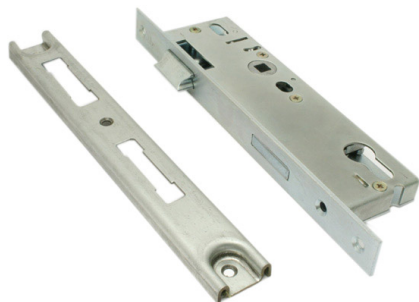


## 1034CLM Lock

Images:



Description:

- Subcategory	: 06. SafeStep locks
- IND/RES	: BOTH
- Full package quantity	: 10
- Unit	: piece (1)
- Weight / Unit	: 0,47kg
- Material	: Galvanised Steel
- Length	: 245mm
- Width	: 31,5mm
- Thickness	: 52mm
- Product Family	: a 092
- Marking	: 1034CLM FF
- Commercial description	: central system, excl. cilinder
- Technical description	: Locking mechanism is universal, left and right hand. Similar mechanism as 1034LOCK, but with different plate. Plate is to be used in combination with Aluminium profiles 1033LS and 1033LD. SafeStep pass door. EuroCylinder C60-2525-2 must be applied. Manual available.