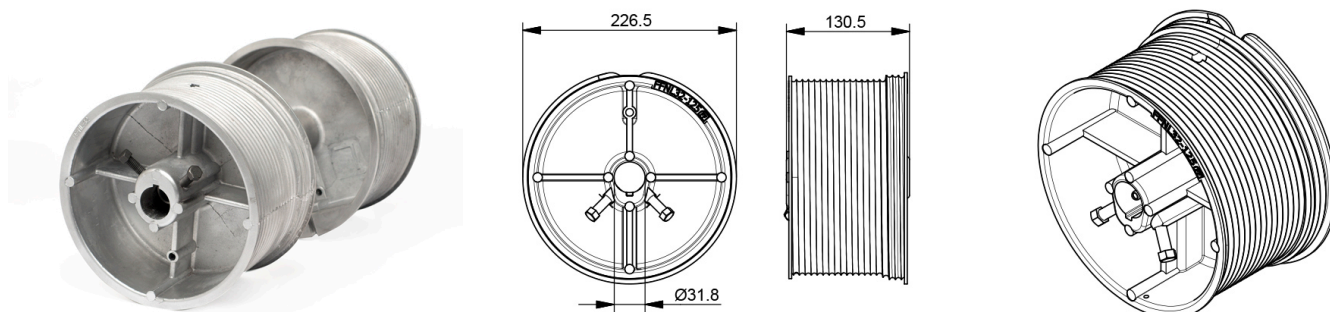


FFNL32-125 Cable drum

Images:



Description:

| | |
|-------------------------|---|
| - Subcategory | : 02. Industrial - NL |
| - IND/RES | : IND |
| - Full package quantity | : 4 |
| - Unit | : pair (2) |
| - Weight / Unit | : 5,1kg |
| - Material | : Aluminium |
| - Length | : 130,5mm |
| - Product Family | : 10 Cable drums |
| - Inside diameter | : 31,8mm |
| - Max. door weight | : 700kg |
| - Outside diameter | : 226,5mm |
| - Safety windings | : 2 |
| - Shaft Size | : 1 1/4" |
| - Marking | : Red = Left, Black = Right |
| - Technical description | : Cable with terminal (alu sleeve) can be hooked into camber of drum. Or can be passed through drum, fixed with hollow-head screw. This gives easy length adjustment. Fixation to the shaft through the key: 1 hollow-head screw M8, directly: 2 3/8inch bolts. |