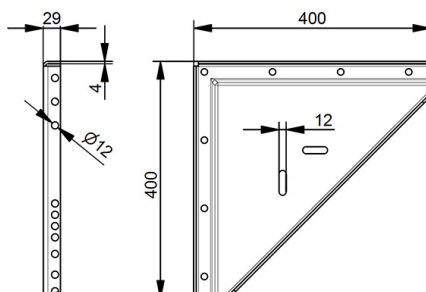
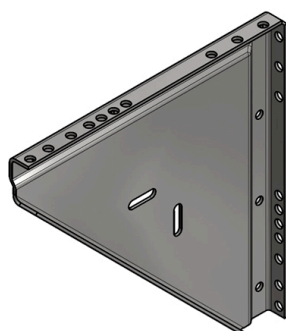


355CS Triangular plate

Images:



Description:

- | | |
|--------------------------|--|
| - Subcategory | : 03. Tri-ang plates |
| - IND/RES | : IND |
| - Full package quantity | : 1 |
| - Unit | : piece (1) |
| - Weight / Unit | : 3,84kg |
| - Material | : Galvanised Steel |
| - Height | : 400mm |
| - Length | : 400mm |
| - Width | : 29mm |
| - Thickness | : 4mm |
| - Product Family | : a 024 |
| - Marking | : 355CS FF |
| - Commercial description | : Industrial doors with springs on beams with cable direct to the door. |
| - Technical description | : To be fixed to the wall and to the vertical angle. Equipped with slotted holes to combine with 355GRS cable guide. |