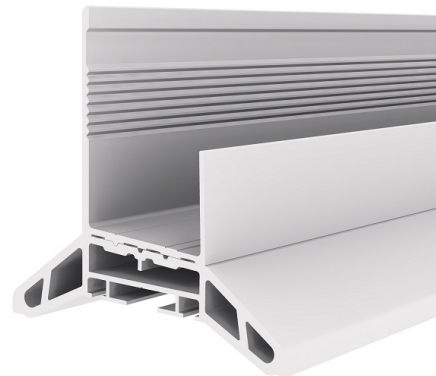
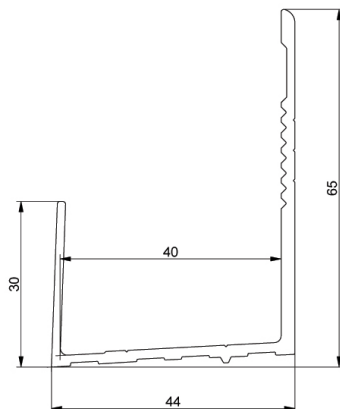
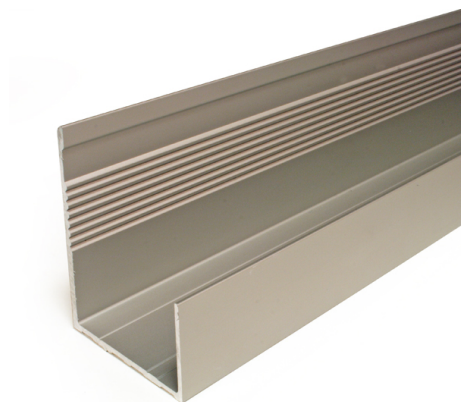


1041U3050 Threshold profile

Images:



Description:

- Subcategory	: 04. SafeStep/SideStep
- IND/RES	: BOTH
- Full package quantity	: 48
- Unit	: piece (1)
- Weight / Unit	: 2,2kg
- Material	: Anodised Aluminium
- Height	: 65mm
- Length	: 3050mm
- Width	: 44mm
- Product Family	: a 056
- Panel thickness	: 40mm
- Commercial description	: L=3050mm
- Technical description	: Providing the opportunity to equip your residential doors with a low threshold pass door. Part of two-piece profile, which makes creating a door opening very easy without milling. Join with 1041LTB threshold profile.