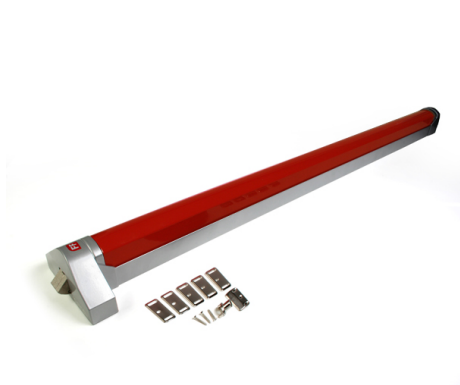


1034PBNIN Panic push bar

Images:



Description:

- | | |
|--------------------------|--|
| - Subcategory | : 06. SafeStep locks |
| - IND/RES | : BOTH |
| - Full package quantity | : 1 |
| - Unit | : set (1) |
| - Weight / Unit | : 3,1kg |
| - Material | : Aluminium, Plastic, Steel |
| - Product Family | : a 097§ |
| - Max. opening width | : 1135mm |
| - Panel thickness | : 40mm |
| - Marking | : FF logo |
| - Commercial description | : Replaces 1034PBIN. |
| - Technical description | : Inside push bar (1034PBIN) needs to be applied with guiding block (1033B). |