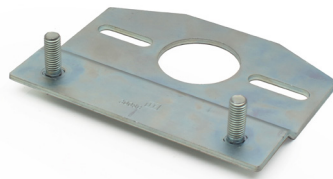


# ISC SHAFT

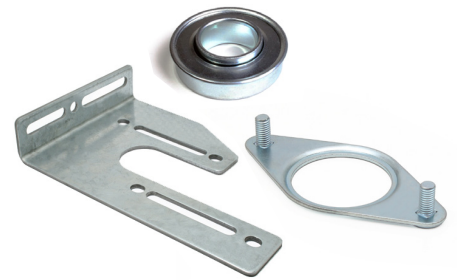
OUTSIDE > IN SPRING MOUNTING



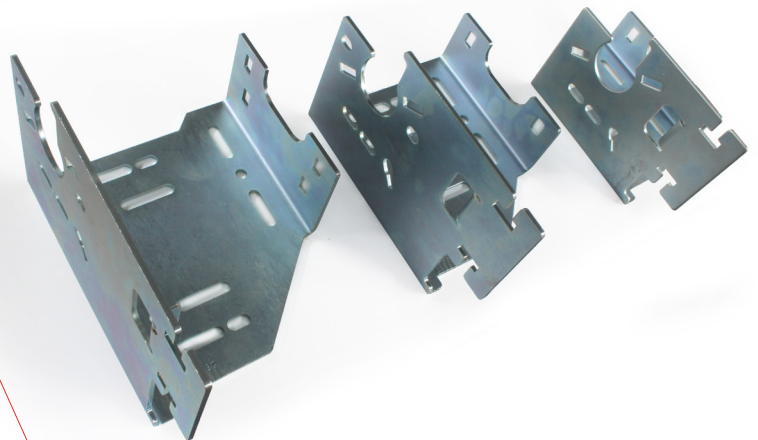
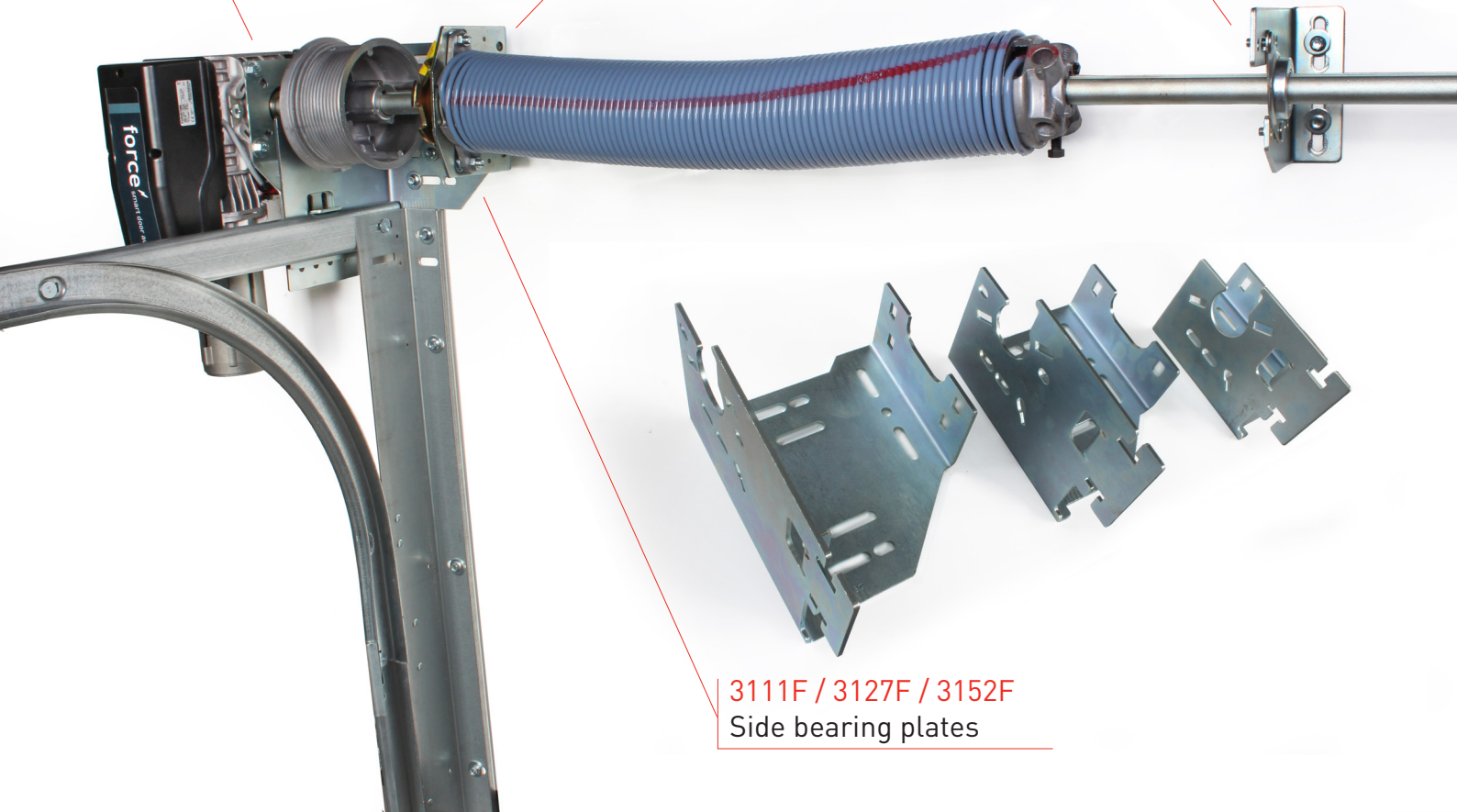
**300PB**  
Operator mounting plate



**300SB**  
Spring support bracket  
(if no spring break device is installed)



**USA8 / USA-B / 325B**  
Mounting plate



**3111F / 3127F / 3152F**  
Side bearing plates

# ISC SHAFT

## MULTIFUNCTIONAL BEARING PLATES

---

