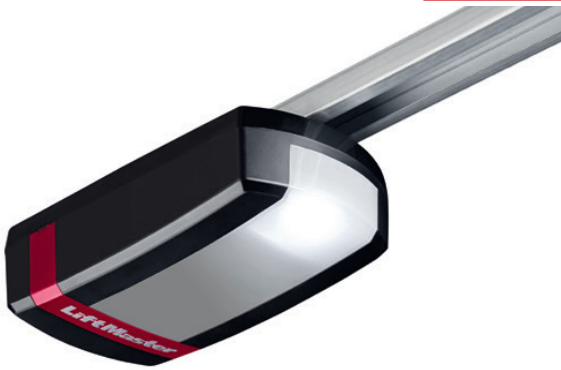


# LIFTMASTER


## GARAGE DOOR OPENER LM100EVO30




**High quality** Chassis and cover  
**Reliable & quiet** Belt drive mechanism  
**Automatic** Force sensing  
**Electronic limits** For easy set up


1000N, belt drive  
 Security+ 2.0 radio technology  
 200mm/sec  
 3-piece rail for max 2.3m OPH  
 Belt-drawbar 8030CR5  
 MyQ enabled


### INCLUDED ACCESSORIES:


**TX4EVF** **2 x 4-CHANNEL REMOTE CONTROL**  
 Operates up to 4 openers. Quick and easy garage access. 

**128EVO** **2-BUTTON WIRELESS WALL CONTROL**  
 Control your garage without a remote control. 

### OPTIONAL ADD-ONS:

**828EVO** **INTERNET GATEWAY**  
 MyQ technology that connects to the internet and allows monitoring and control of the garage door opener. 

**747EV** **WIRELESS KEYPAD**  
 Convenient, secure access from outside the garage with a 4-digit PIN. 

**FLA1-LED** **LED FLASHING LIGHT**  
 Lamp flashes while the drive is in action. Applicable for all garage door openers. 

### SMART

**Space-saving design** Opens up the ceiling.  
**Belt drive system** For powerful performance.  
**Soft-start and soft-stop** For smooth operation.

### QUIET AND RELIABLE

**Heavy lifting power** Operates doors up to 150kg.  
**Maintenance-free belt drive** For quiet operation.  
**Quiet DC motor** Eliminates noise.

### SECURE AND SAFE

**Automatic Force** sensing and obstacle detection.  
**No unauthorized access** With Security+ 2.0  
**Timer-to-close** Automatically closes the door after a preset amount of time.