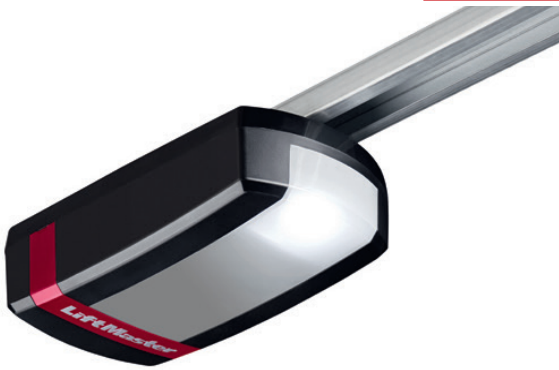


LIFTMASTER

GARAGE DOOR OPENER LM130EVO25



High quality Chassis and cover
Reliable & quiet Belt drive mechanism
Automatic Force sensing
Electronic limits For easy set up

1300N, belt drive
Security+ 2.0 radio technology
130mm/sec
3-piece rail for max 2250mm OPH
Belt-drawbar 8025CR5
MyQ enabled

INCLUDED ACCESSORIES:

TX4EVF

2 x 4-CHANNEL REMOTE CONTROL
Operates up to 4 openers. Quick and easy garage access.



128EVO

2-BUTTON WIRELESS WALL CONTROL
Control your garage without a remote control.



OPTIONAL ADD-ONS:

828EVO

INTERNET GATEWAY
MyQ technology that connects to the internet and allows monitoring and control of the garage door opener.



747EV

WIRELESS KEYPAD
Convenient, secure access from outside the garage with a 4-digit PIN.



FLA1-LED

LED FLASHING LIGHT
Lamp flashes while the drive is in action. Applicable for all garage door openers.



SMART

Space-saving design Opens up the ceiling.
Belt drive system For powerful performance.
Soft-start and soft-stop For smooth operation.

QUIET AND RELIABLE

Heavy lifting power Operates doors up to 200kg.
Maintenance-free belt drive For quiet operation.
Quiet DC motor Eliminates noise.

SECURE AND SAFE

Automatic Force Sensing and obstacle detection.
No unauthorized access With Security+ 2.0
Timer-to-close Automatically closes the door after a preset amount of time.